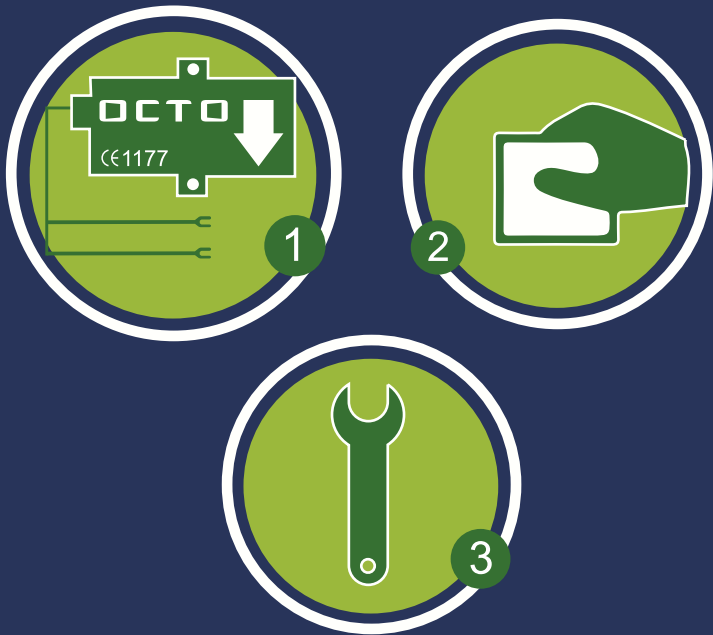


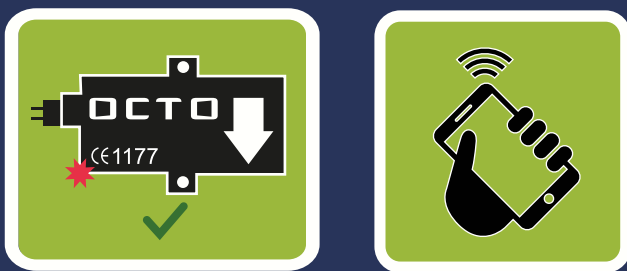
1

What you will need



- 1 - Your Supereasy (included)
- 2 - Cleaning cloth (included)
- 3 - A suitable spanner or wrench for the connections on the battery (not included)

How to tell if your Supereasy has been fitted correctly



The light on the side of your box will begin to flash.

You'll receive a text message from us a few minutes later confirming your Supereasy has been activated.

Specifications

Power supply: 12 Vdc
Working temperature: from -30° to +80° C
Protection level: IP 65

Hereby Octo telematics S.p.A., legal address in Via Vincenzo Lamaro 51 - 00173 Rome, declares that this Telematic Unit in compliance with the essential requirements and other relevant provisions of Directive 2014/53/EU. The Conformity Declaration could be accessed on the site: www.octotelematics.com/certifications



750400790001

Before you get started

Park your car outdoors



Turn off the engine and let it cool



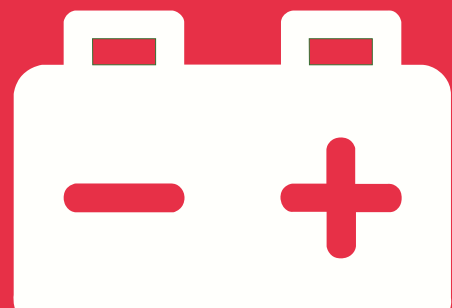
Remember:

Don't remove the box warranty seal.

Don't open or modify the Supereasy



How to fit your Supereasy

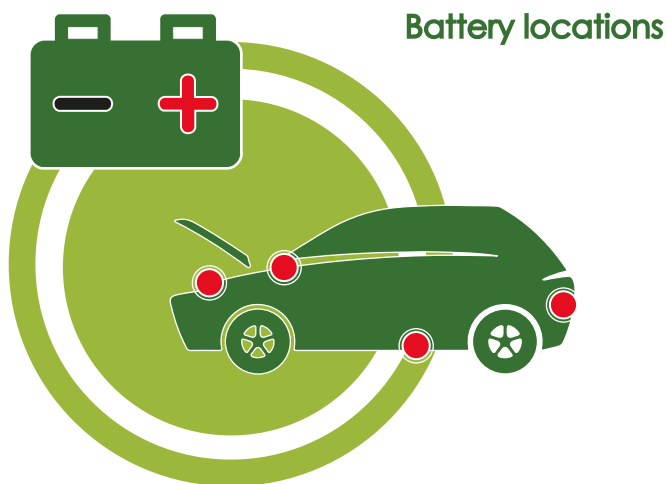


Step 1

Find your car battery

The battery location can vary from car to car, the car manual will illustrate the location.

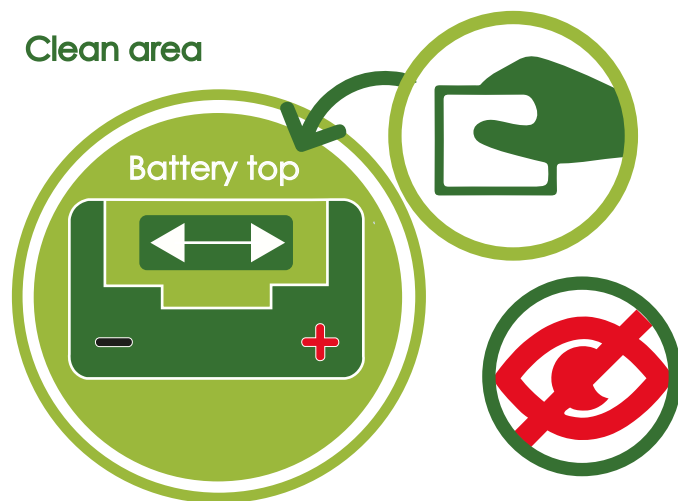
Your battery may have a plastic cover. Lift or remove this whilst you fit your box.



Step 2

Clean the surface area of your battery with the cloth provided

Clean area



Choose a flat part on top of the battery of your Supereasy. Carefully clean the area with the enclosed cloth.

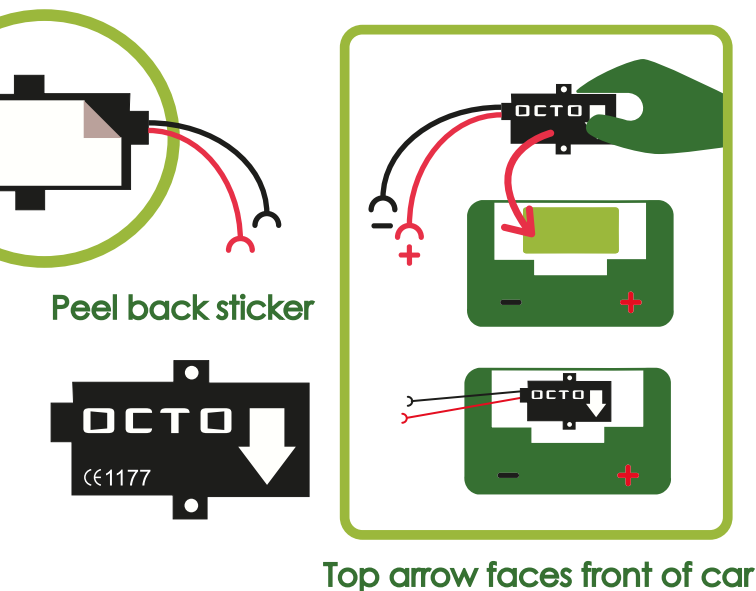
⚠ Be careful - don't use the cloth near your face or eyes as it's an irritant. It's also flammable, keep it away from sources of fire.

Step 3

Stick your Supereasy to the battery

Peel the back of the sticker from the underside of the Supereasy and position it so the arrow on the top points towards the FRONT of the car.

Place your Supereasy on the new clean area of the battery and make sure it's fixed firmly.



Step 4

Connect the cables to the positive and negative terminals of your battery

Carefully loosen the small nuts fixing the positive and negative wires to your battery terminals, don't remove them entirely. Fit the connector from the red cable beneath the connection on the positive terminal, and the connector from the black cable beneath the connection on the negative terminal.

The positive and negative terminals will normally be marked on your battery with a positive (+) and negative (-) sign. Tighten the nuts and replace your battery cover if you have one.

⚠ Warning - don't touch the battery terminals at the same time as this could result in an electric shock.

